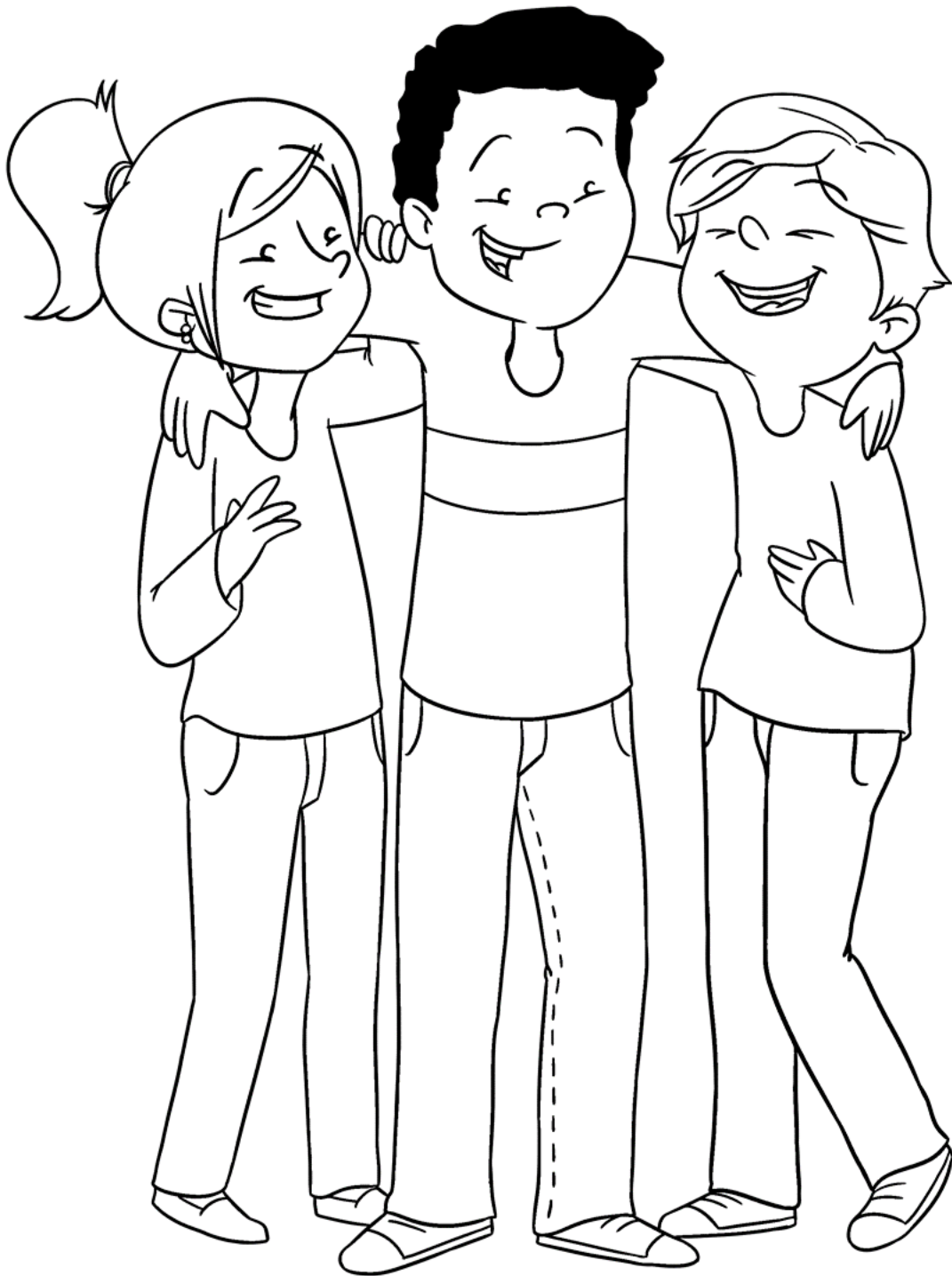


CHARACTER EDUCATION

ACCEPTANCE



ACCEPTANCE



TABLE OF CONTENTS

FORMS & SUPPLEMENTS

Parent Letter.....	3
Writing Prompts & Role Play Scenarios	4
Morning Announcements.....	5
Reward Tags and Bookmarks.....	6-7
Pre and Post Survey.....	8-9
Certificate.....	10-11

ACTIVITIES

Ways to be Accepting.....	12-14
Students/Leaders/Careers/Digital Acceptance.....	15-18
Think and Respond.....	19-24
Multiple Choice.....	25-30
An Accepting World	31-40
Self-reflection.....	41-43
Task Cards: Think and Discuss.....	44-50
Situation Cards: What would you do?	51-57

BULLETIN BOARD/DÉCOR ELEMENTS & GOOGLE LINK

Definition Posters.....	58-61
Quote Poster.....	62
Students/Careers/Leaders/ Digital Acceptance Posters....	63-66
Acceptance Pledge.....	67-68
Bulletin Board Letters.....	69-72
Binder Spines.....	73
Google Slides Link & Instructions.....	74

ACCEPTANCE

PARENT LETTER

Hello Parents,

At school, we are focusing on helping students understand that acceptance means more than just tolerance—it's about showing respect and kindness toward others regardless of their background, interests, or opinions. We want every student to feel valued for who they are and confident enough to extend that same respect to others.

Here are a few ways you can encourage acceptance at home:

- Model understanding.** Talk openly and respectfully about differences in people's cultures, abilities, beliefs, or perspectives. When children see adults showing respect, they learn to do the same.
- Encourage perspective-taking.** Ask questions like, "How do you think they felt?" or "Why do you think they acted that way?" These conversations help children practice empathy.
- Celebrate differences.** Expose your child to diverse stories, foods, music, and traditions. Celebrate what makes people unique and discuss how diversity makes communities stronger.
- Address unkind behavior.** If you hear negative comments or stereotypes, take time to discuss why those words can hurt and how to respond with respect instead.
- Promote inclusion.** Encourage your child to include others who may be left out at school, in activities, or online spaces. One small act of acceptance can have a big impact.

By working together, we can help our middle school students grow into compassionate, confident young people who value and accept others for who they are. Thank you for your ongoing support in helping us build a community where everyone belongs.

ACCEPTANCE

WRITING PROMPTS

1. Describe how someone can show acceptance in school or online.
2. Write about a moment when someone made you feel welcomed or included. How did it impact you?
3. Why is it important to accept people who have different interests, backgrounds, or opinions than you?
4. If you saw a classmate being excluded or judged, how would you show acceptance?
5. What is one thing about yourself you want to embrace more instead of comparing yourself to others?
6. How can students show acceptance and support online instead of judging or leaving out others?

ACCEPTANCE

SAMPLE ROLE PLAY SCENARIOS

- New Student: A new student just moved from another country. They speak with an accent and are sitting alone at lunch. Your group notices them. What do you do?
- Learning Differences: A student in your class needs extra time on tests or works with a special teacher. Others are making rude comments. How can you show acceptance?
- Religion or Culture: A peer celebrates different holidays and has different traditions. Your friend makes a joke about it. What do you say or do?
- Special Needs Inclusion: A student in P.E. has a physical disability and needs help participating in group activities. Some classmates leave them out. What can be done?
- Gender Stereotypes: A boy wants to join the dance club, and someone says, "That's not for boys." How can you challenge the stereotype and show support?
- Online Judgment: Someone posts a picture of themselves in an outfit or activity that's not "typical," and people start making fun of them in the comments. What can you do to be an accepting digital citizen?
- Mental Health or Emotions: A student seems anxious and quiet lately. Some classmates say they're "weird." How can you show understanding?
- Language Barrier: A student is learning English and struggles to speak up in class. People laugh when they mispronounce a word. How can you support them?

ACCEPTANCE

MORNING ANNOUNCEMENTS

Name: _____

Date: _____

***Week 1:** We are learning all about Acceptance. We defined acceptance as recognizing, appreciating, and respecting those who are different from you. Some ways you can show acceptance at school are treating others fairly, learning about different cultures, including everyone, and having patience with those that have different abilities.

***Week 2:** We are continuing to learn all about Acceptance. Remember being accepting means recognizing, appreciating, and respecting those who are different from you. Some ways that you can show acceptance at home are appreciating what makes you and others unique, reading books and watching shows about cultures that are different than yours, and not judging someone before you get to know them.

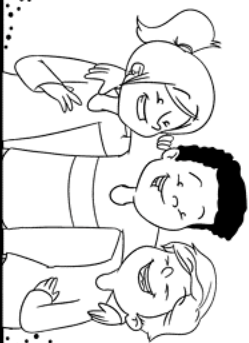
***Week 3:** We are continuing to learn all about Acceptance. Remember acceptance means recognizing, appreciating, and respecting those who are different from you. Some ways that you can show acceptance in your community is by being open-minded, getting to know neighbors who are different from you, being free from bias or prejudice, and being respectful online of different opinions.

***Week 4:** As we continue to learn about Acceptance, let's reflect on this quote by Audre Lorde, "It is not our differences that divide us. It is our inability to recognize, accept, and celebrate those differences." This means that accepting others can bring us together by appreciating our differences. What is one way you will be accepting today?

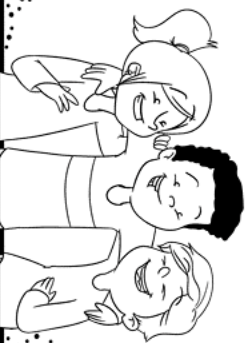
***Week 5:** Acceptance is an essential trait to have for many careers. Counselors for example show a lot of acceptance. They are trained to give guidance on personal, social, or psychological problems. There are a number of characteristics that counselors must have to be effective, including empathy, communication, listening skills, and being accepting of others' differences. Counselors work with a diverse group of clients and many of them may have different religions, cultures, or views different than their own. They must accept those differences, to create a successful working relationship to make progress with their client. Think of a career you may be interested in and how you can show acceptance within that career.

***Week 6:** Acceptance is also shown by many leaders throughout history and is an important feature of being a leader. One such leader was Mahatma Gandhi, an Indian Lawyer, who used nonviolent protests to achieve India's independence from Britain and inspired movements for civil rights and freedom across the world. Gandhi led campaigns for easing poverty, expanding women's rights, and building religious and ethnic peace. He showed us the importance of being a leader who showed acceptance, he said "*I do not want my house to be walled in on all sides and my windows to be stifled. I want all the cultures of all lands to be blown about my house as freely as possible.*" Think about how you can be a leader in your classroom by showing acceptance.

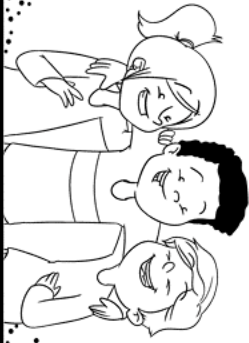
I SHOWED ACCEPTANCE



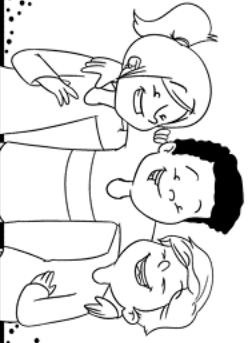
I SHOWED
ACCEPTANCE



I SHOWED
ACCEPTANCE



I SHOWED ACCEPTANCE



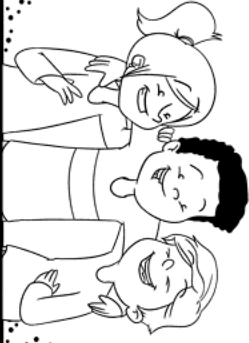
I SHOWED
ACCEPTANCE



I SHOWED
ACCEPTANCE



I SHOWED
ACCEPTANCE



I SHOWED
ACCEPTANCE



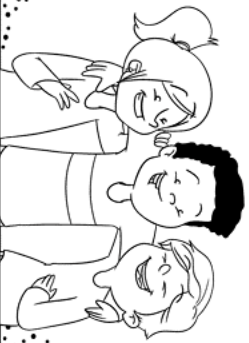
I SHOWED
ACCEPTANCE



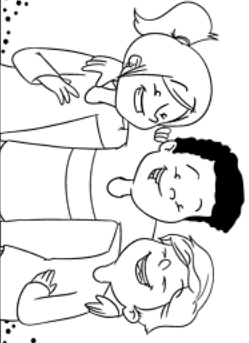
I SHOWED
ACCEPTANCE



I SHOWED
ACCEPTANCE



I SHOWED
ACCEPTANCE



I SHOWED
ACCEPTANCE



I SHOWED
ACCEPTANCE



I SHOWED
ACCEPTANCE



I CAN SHOW ACCEPTANCE

BY

Recognizing,
appreciating,
AND respecting
THOSE WHO ARE
different
FROM ME.



CHARACTER EDUCATION

I CAN SHOW ACCEPTANCE

BY

Recognizing,
appreciating,
AND respecting
THOSE WHO ARE
different
FROM ME.

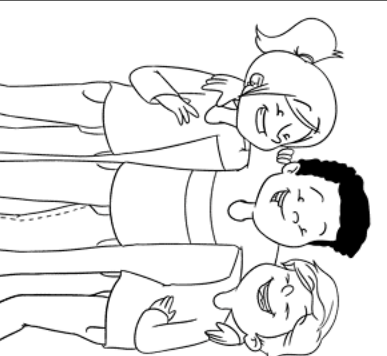


CHARACTER EDUCATION

I CAN SHOW ACCEPTANCE

BY

Recognizing,
appreciating,
AND respecting
THOSE WHO ARE
different
FROM ME.



CHARACTER EDUCATION

I CAN SHOW ACCEPTANCE

BY

Recognizing,
appreciating,
AND respecting
THOSE WHO ARE
different
FROM ME.

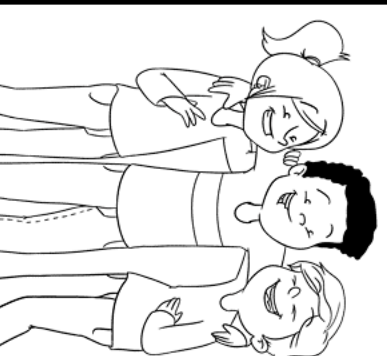


CHARACTER EDUCATION

I CAN SHOW ACCEPTANCE

BY

Recognizing,
appreciating,
AND respecting
THOSE WHO ARE
different
FROM ME.



CHARACTER EDUCATION

ACCEPTANCE

PRE-SURVEY

Name: _____

Date: _____

I am learning to show acceptance.



Always



Sometimes



Hardly



Never

I can show acceptance by treating everyone with respect, even if they are different from me.				
I can accept myself for who I am and be proud of what makes me unique.				
I can recognize when someone is being left out and help them feel included.				
I can listen to others' ideas and opinions, even when I don't agree.				
I can appreciate the unique strengths and qualities people bring to our school.				
I can speak up when someone is being treated unfairly or judged.				
I can choose words and actions that help others feel valued and welcome.				

ACCEPTANCE

POST-SURVEY

Name: _____

Date: _____

I am learning to show acceptance.



Always



Sometimes



Hardly



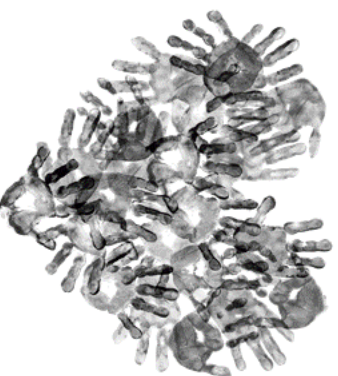
Never

I can show acceptance by treating everyone with respect, even if they are different from me.				
I can accept myself for who I am and be proud of what makes me unique.				
I can recognize when someone is being left out and help them feel included.				
I can listen to others' ideas and opinions, even when I don't agree.				
I can appreciate the unique strengths and qualities people bring to our school.				
I can speak up when someone is being treated unfairly or judged.				
I can choose words and actions that help others feel valued and welcome.				

ACCEPTANCE GOOD CHARACTER AWARD

Presented to:

Teacher



Date

ACCEPTANCE GOOD CHARACTER AWARD

Presented to:



Teacher

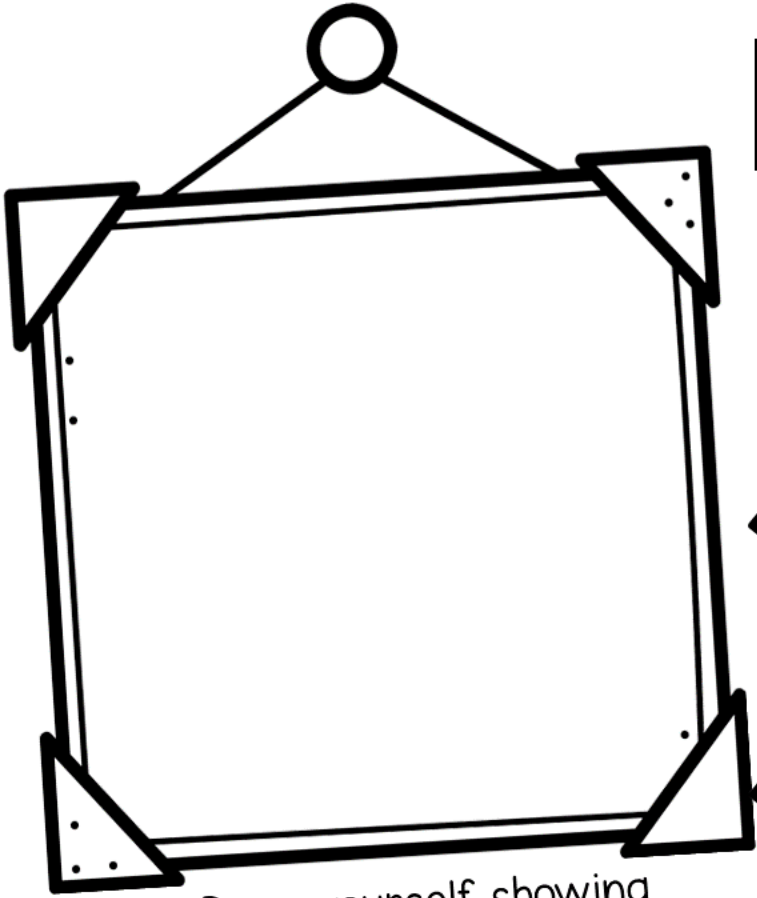
Date

ACCEPTANCE

WAYS TO SHOW ACCEPTANCE

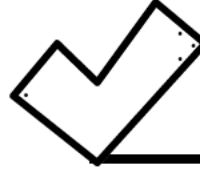
Name: _____

Date: _____



Draw yourself showing acceptance.

I can be accepting by...



What does Acceptance mean to me?



ACCEPTANCE

WAYS TO SHOW ACCEPTANCE

Name: _____

Date: _____

Ways I can show acceptance at School



- Invite others to join your group or sit with you at lunch
- Listen to classmates' ideas during group work
- Include new students or peers who seem alone
- Respect differences in culture, style, and interests
- Stand up for someone who is being teased or excluded
- Use kind language toward everyone, not just friends
- Avoid judging others based on rumors or appearances
- Compliment someone on their effort, not just their talent
- Make space for others to express their identity safely

Ways I can show acceptance at Home



- Treat family members with patience and respect
- Accept siblings' different personalities and interests
- Encourage siblings or relatives who feel different/left out
- Allow others to have personal space when they need it
- Listen during conversations without interrupting
- Avoid judging family members for mistakes or differences
- Speak kindly during disagreements — no put-downs or eye-rolling
- Respect everyone's opinions, even if they're different from yours

Ways I can show acceptance in my Community



- Be polite and respectful to neighbors and community helpers
- Participate in community events or service projects
- Include others in activities at parks or local hangouts
- Appreciate and learn about different cultures in your community
- Stand up against stereotypes and unfair treatment
- Use kind behavior in public places — stores, buses, recreation centers
- Be welcoming and friendly to people you don't know well

ACCEPTANCE

WAYS TO SHOW ACCEPTANCE SORT

Name: _____

Date: _____

Ways I can show
acceptance in my School

Ways I can show
acceptance in my Home

Ways I can show acceptance
in my Community

ACCEPTANCE

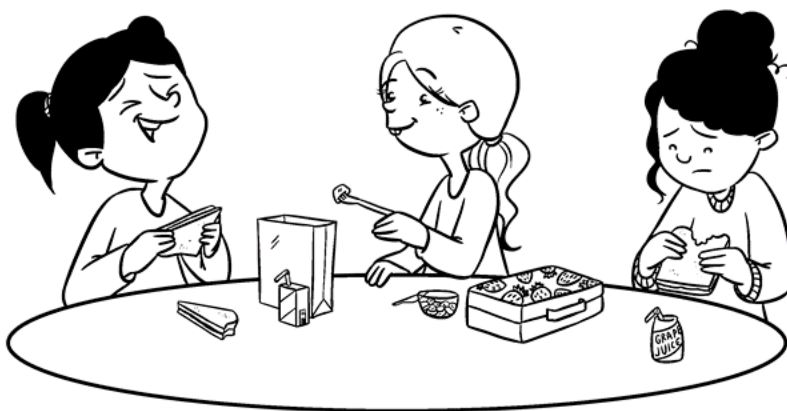
STUDENTS WITH CHARACTER

Name: _____

Date: _____

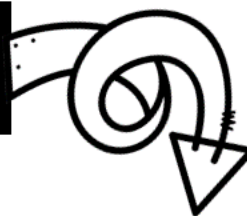
Accepting Students

THE NEW KID



On her first day at a new school, Emma felt nervous walking into the crowded cafeteria. She didn't know anyone and was about to sit at an empty table when Ava and her friends called her over with a smile. They made room for her, asked questions about what she liked to do, and invited her to hang out with them at recess. Even though Emma had different interests and a different style, the girls listened, included her in their conversation, and helped her feel like she belonged.

How did this student show Acceptance?



ACCEPTANCE

LEADERS WITH CHARACTER

Name: _____

Date: _____

Accepting Leaders

GANDHI



Mahatma Gandhi was an Indian Lawyer, who used nonviolent protests to achieve India's independence from Britain and inspired movements for civil rights and freedom across the world. In 1915, he set about organizing peasants, farmers, and laborers to protest against excessive land tax and discrimination. Assuming leadership of the Indian National Congress, Gandhi led nationwide campaigns for easing poverty, expanding women's rights, and building religious and ethnic peace. He was imprisoned many times for many years because of his efforts. He undertook several hunger strikes to help stop the religious violence within India. He showed us the importance of being a leader who showed acceptance, he said *"I do not want my house to be walled in on all sides and my windows to be stifled. I want all the cultures of all lands to be blown about my house as freely as possible."*

How did Gandhi show Acceptance?



ACCEPTANCE

CAREERS WITH CHARACTER

Name: _____

Date: _____

Accepting Careers

COUNSELOR



Counselors are trained to give guidance on personal, social, or psychological problems. They may specialize in certain areas such as marriage counseling or school counseling. There are a number of characteristics that counselors must have to be effective, including empathy, communication, listening skills, and being accepting of others' differences. Counselors work with a diverse group of clients and many of them may have different religions, cultures, or views different than their own. They must accept those differences, to create a successful working relationship to make progress with their client.

How do Counselors show Acceptance?



ACCEPTANCE

DIGITAL CHARACTER

Name: _____

Date: _____

Digital Acceptance

ONLINE DEBATE



In their online class, students were debating whether schools should have later start times. Sofia argued that waking up later would help students get more sleep and improve their health, while Ethan believed the change might interfere with sports, family routines, and after-school jobs. Instead of arguing or making rude comments in the chat, both students listened carefully when the other was speaking. Sofia said, "I hadn't thought about how it might affect activities—that's a good point," and Ethan responded with, "I agree that sleep is important too." Their classmates followed their example by adding supportive messages like, "Thanks for sharing your idea," or "I respectfully disagree because..." Throughout the debate, everyone showed acceptance by considering different experiences and perspectives.

How did he show digital Acceptance?



ACCEPTANCE

THINK AND RESPOND

Name: _____

Date: _____

Read the questions about acceptance and respond.

What does acceptance mean to you, and why is it important?

How can showing acceptance help make new friendships?

What are some reasons people struggle to accept others who are different from them?

ACCEPTANCE

THINK AND RESPOND

Name: _____

Date: _____

Read the questions about acceptance and respond.

How does accepting others help create a more positive school community?

In what ways can you show acceptance during group work or class discussions?

How can you show acceptance online, even when you disagree with someone?

ACCEPTANCE

THINK AND RESPOND

Name: _____

Date: _____

Read the questions about acceptance and respond.

Think of a time
someone accepted
you for who you are.
How did it make you
feel?

What can you do if
you notice someone
being excluded
because of their
interests or
appearance?

How can you show
acceptance toward
someone who has
different opinions
than you?

ACCEPTANCE

THINK AND RESPOND

Name: _____

Date: _____

Read the questions about acceptance and respond.

Why is it important to accept people from different cultures, backgrounds, or identities?

How can practicing acceptance help prevent bullying?

What role does empathy play in accepting others?

ACCEPTANCE

THINK AND RESPOND

Name: _____

Date: _____

Read the questions about acceptance and respond.

Why is self-acceptance just as important as accepting others?

How can media and social networks influence the way we see others?

What is one stereotype you think people should stop using, and why?

ACCEPTANCE

THINK AND RESPOND

Name: _____

Date: _____

Read the questions about acceptance and respond.

How can you encourage your friends to be more accepting and inclusive?

How would you feel if you moved to a new school and no one accepted you?

What is one small action you can take this week to show acceptance to someone new?

ACCEPTANCE

MULTIPLE CHOICE

Name: _____

Date: _____

ACCEPTANCE: COLOR THE CHECKMARK OF YOUR ANSWER.

A new student joins your class and sits alone at lunch.

Walk past and sit with your usual group

Invite them to sit with you

Laugh with friends about how shy they look

Your friend says they don't want to hang out with someone because of their clothes

Remind your friend that people have different styles

Agree so you don't upset your friend

Tell others what your friend said

You're assigned a partner you've never talked to before.

Ask to switch partners

Complain loudly about the assignment

Work with them and get to know them

ACCEPTANCE

MULTIPLE CHOICE

Name: _____

Date: _____

ACCEPTANCE: COLOR THE CHECKMARK OF YOUR ANSWER.

A classmate doesn't celebrate the same holidays as you.

Ask polite questions to learn more

Tease them about it

Avoid talking to them

Someone shares an unpopular opinion during a discussion.

Tell them they're wrong

Interrupt them

Listen respectfully and respond kindly

Your friend joins an activity you think is "weird."

Support them and ask what they enjoy about it

Tell them they should quit

Laugh and tell others

ACCEPTANCE

MULTIPLE CHOICE

Name: _____

Date: _____

ACCEPTANCE: COLOR THE CHECKMARK OF YOUR ANSWER.

A classmate has a different learning style and needs extra time.

Point it out so everyone knows

Be patient and offer help if they want it

Get annoyed

You overhear someone making fun of a student's name.

Correct them and show respect for the student

Spread the joke further

Laugh along so you're not targeted

Your friend expresses a different opinion during a debate.

Tell them their opinion is dumb

Listen and respond respectfully

Stop being friends

ACCEPTANCE

MULTIPLE CHOICE

Name: _____

Date: _____

ACCEPTANCE: COLOR THE CHECKMARK OF YOUR ANSWER.

A student in your class
uses a wheelchair.

Push their chair without
asking

Treat them like any other
classmate

Avoid them so you don't
say something wrong

You see someone
being excluded from
a group project.

Invite them to join and
share their ideas

Let them sit there quietly

Keep them out since the
group is full

A student likes music
you've never heard
of.

Call their taste weird

Tell everyone how
strange they are

Ask them to share a song
or tell you about it

ACCEPTANCE

MULTIPLE CHOICE

Name: _____

Date: _____

ACCEPTANCE: COLOR THE CHECKMARK OF YOUR ANSWER.

Your classmate speaks English as a second language.

Be patient and listen respectfully

Avoid including them in conversations

Make jokes about their accent

A new student dresses differently than everyone else.

Compliment something you like and be friendly

Whisper to friends about their outfit

Stare at them and laugh

Your group decides to vote on which game to play and your choice loses.

Refuse to participate

Yell that the game is stupid

Go along with the group respectfully

ACCEPTANCE

MULTIPLE CHOICE

Name: _____

Date: _____

ACCEPTANCE: COLOR THE CHECKMARK OF YOUR ANSWER.

Someone shares a personal challenge they're going through.

Change the subject

Listen without judging

Share their secret with others

A group is teasing a student because of their skin color.

Speak up or report it to a trusted adult

Laugh along so you blend in

Stay quiet so you don't get involved

During a class discussion, you find out that a classmate supports a different political opinion than you.

Tell them their opinion is wrong and argue until they agree

Listen respectfully and share your thoughts calmly

Refuse to work with them anymore

ACCEPTANCE

AN ACCEPTING WORLD

Name: _____

Date: _____

What Makes Us Unique? Identity Map

Our differences make us unique. Complete the identity map below to find out what makes you unique.

Fav Subjects:

Culture/Traditions:

Future goals:

Hobbies:

Name:

Strengths:

Personal Values:

Family Background:

Struggles:

Causes you care about:

ACCEPTANCE

AN ACCEPTING WORLD

Name: _____

Date: _____

Tolerance vs. Acceptance

Tolerance is the ability to tolerate or endure something, in particular the opinions or behavior that one does not necessarily agree with. Acceptance goes a step further welcoming those differences, without attempting to change or protest them. Read the beliefs below and put a checkmark if they show tolerance or acceptance.

	TOLERANCE	ACCEPTANCE
You think a classmate's beliefs are wrong, but you don't say it aloud.		
You try to think about how to include everyone.		
You learn about other cultures so that you can better understand others.		
You are fine with other cultures but do not want to learn about them.		
You expect others to include themselves.		
You have different beliefs than your classmate, but don't think they are in the wrong.		
You put up with your friends' views that are different than yours.		
You accept your friends' views that are different than yours.		
You are respectful to those who are different than you, but don't agree with it.		
You do not try to change people who are different than you.		

ACCEPTANCE

AN ACCEPTING WORLD

Name: _____

Date: _____

Breaking Stereotypes

Match the stereotype below with a better way to think:

Stereotype

"People who dress differently are weird."

"Someone who speaks another language doesn't belong."

"Students who learn differently aren't smart."

"You can't be friends with someone who doesn't like what you like."

Better Mindset



A stereotype I want to help stop at school is:

ACCEPTANCE

AN ACCEPTING WORLD

Name: _____

Date: _____

Walk in Their Shoes Perspective Activity

Practice empathy to understand different viewpoints.



Perspective: A student who just moved from another country
What might this person be feeling?

What could you say or do to show acceptance?

How might your actions impact them?



Perspective: Someone who feels left out or uncertain where they belong
What might this person be feeling?

What might this person be feeling?

What could you say or do to show acceptance?

How might your actions impact them?



Perspective: A classmate who has a different opinion than you
What might this person be feeling?

What might this person be feeling?

What could you say or do to show acceptance?

How might your actions impact them?

ACCEPTANCE

AN ACCEPTING WORLD

Name: _____

Date: _____

Being Open-minded

Think about certain things that you are open-minded about, things you have never thought about, and those things that you are decided on.

Self-reflect in the boxes below.

I have made my mind up about:

?



I am open minded about:



I have given little or no thought to:



ACCEPTANCE

AN ACCEPTING WORLD

Name: _____

Date: _____

"Acceptance in Action" Week Challenge

Complete at least 3 items this week and check them off:

- ☐ Invite someone new to sit or work with you
- ☐ Use respectful language during a disagreement
- ☐ Learn something new about another culture
- ☐ Ask someone's preferred name and use it
- ☐ Speak up if you hear someone being judged
- ☐ Compliment someone on their effort or uniqueness
- ☐ Include someone who is being left out

Write about one:

What did you do?

How did the other person react?

How did it make you feel?



ACCEPTANCE

AN ACCEPTING WORLD

Name: _____

Date: _____

What are some examples of acceptance you have seen
from others?

Teacher



Parent/Guardian



Strangers



Friends



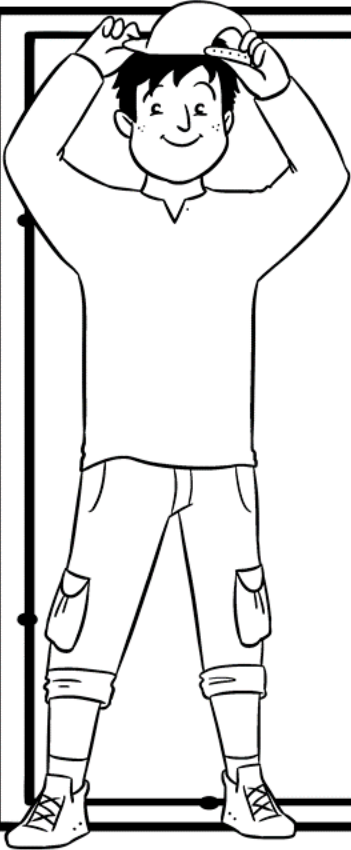
ACCEPTANCE

AN ACCEPTING WORLD

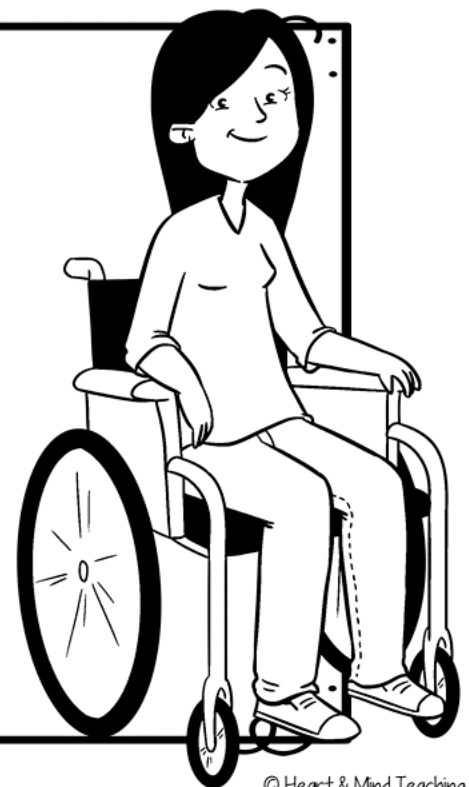
Name: _____

Date: _____

What would society look like if no one was accepting?



Would you want to live in this society, why or why not?



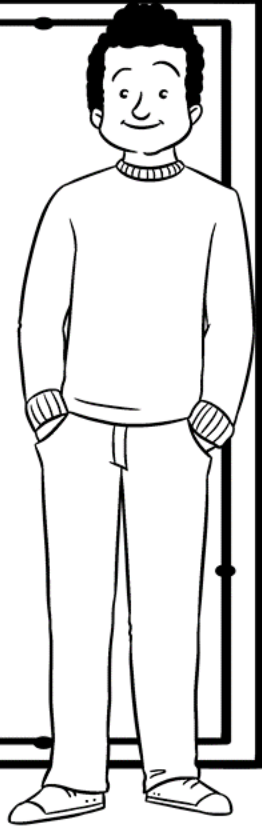
ACCEPTANCE

AN ACCEPTING WORLD

Name: _____

Date: _____

What would society look like if everyone was accepting?



Would you want to live in this society, why or why not?



ACCEPTANCE

AN ACCEPTING WORLD

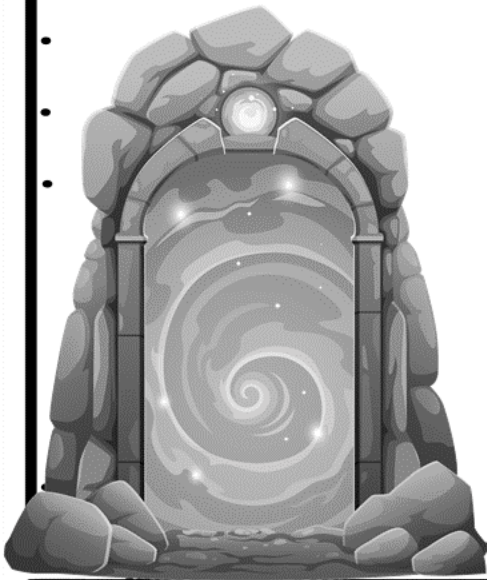
Name: _____

Date: _____

W.

W.

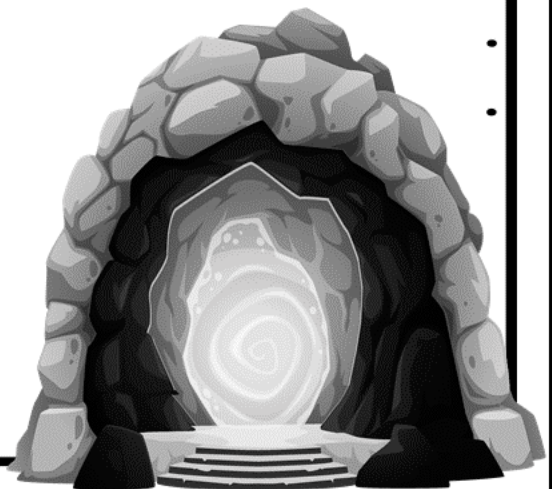
Let's time travel to the future, what is one way you would want people to be more accepting? Why?



W.

W.

Let's time travel to the past, what is one way you would have wanted people to be more accepting? Why?



W.

ACCEPTANCE

SELF-REFLECTION

Name: _____

Date: _____

We all make mistakes, that is how we learn! Think of one example of a time where you did NOT show accepting behavior.

I was NOT accepting when I...

○

○

.



What I learned...

○

○

.



This is how I will be more accepting...

○

○

.



ACCEPTANCE

SELF-REFLECTION

Name: _____

Date: _____

Think about what acceptance means to you and how you like to show acceptance or have others show acceptance to you.

One way I would like to show acceptance

	<p>• •</p> <p>•</p> <p>•</p>
--	------------------------------

One way I would want acceptance shown to me

	<p>• •</p> <p>•</p> <p>•</p>
--	------------------------------

Being accepting is important to me because

	<p>• •</p> <p>•</p> <p>•</p>
--	------------------------------

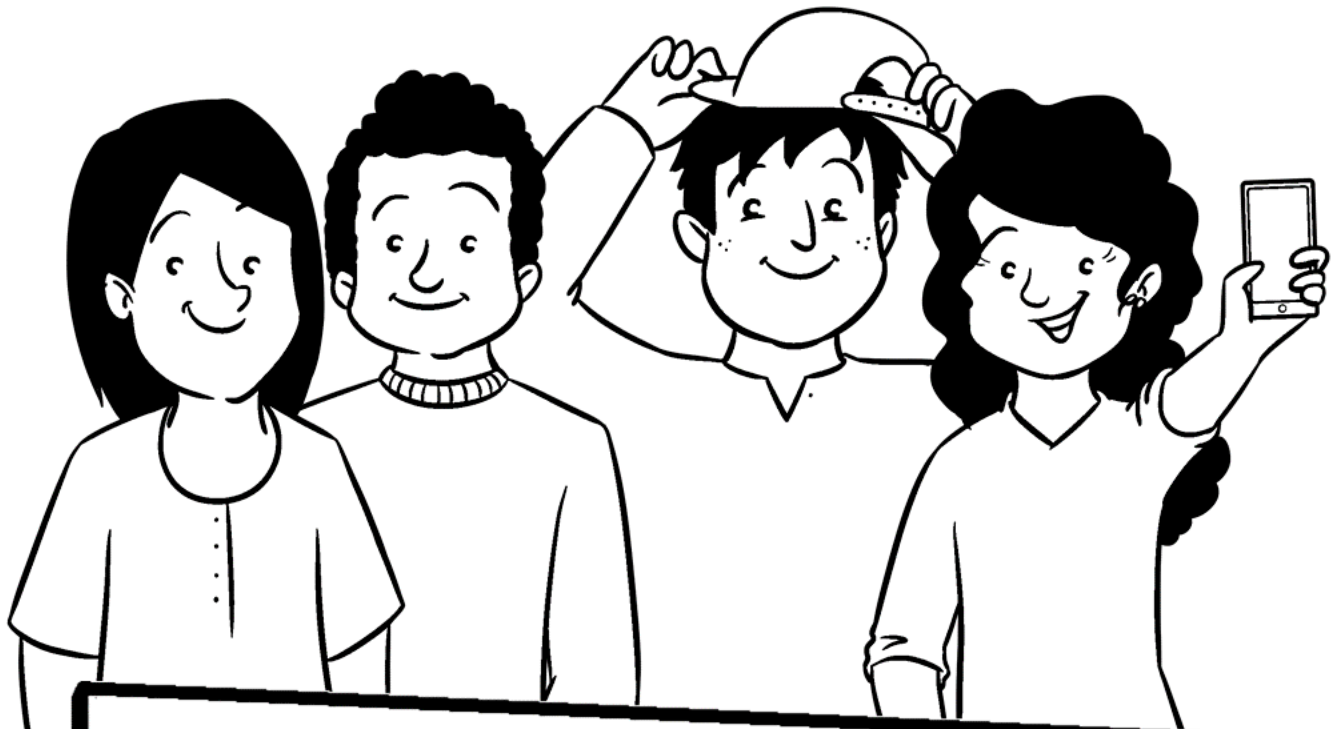
ACCEPTANCE

SELF-REFLECTION

Name: _____

Date: _____

Think about the ways you show acceptance, pick one that you feel you are consistent in doing and reflects your good character.



I show acceptance by:

I SHOW
ACCEPTANCE

ACCEPTANCE

TASK CARDS

TASK

THINK & DISCUSS

CARDS



TIPS FOR USING TASK CARDS

- Encourage students to think about each question and share their response.
- Pair students together to have them take turns answering the task cards.
- Use the task cards as a center activity.
- To make it a writing activity, have students write their responses on paper.
- To make it a class wide activity, read the card out loud and encourage student responses. (see included PowerPoint slides to display on board)

DIG DEEPER QUESTIONS

- Are there multiple answers that could be considered accepting decisions?
- How are your responses different or similar to other students?
- Why are some of our responses similar or different?
- What impacts our decision to be accepting or not?
- Does one unaccepting decision make you an unaccepting person?
- What will happen if you repeatedly make unaccepting decisions?

ACCEPTANCE



THINK & DISCUSS

What does acceptance mean to you, and why does it matter in middle school?

ACCEPTANCE



THINK & DISCUSS

How does accepting others help build stronger friendships?

ACCEPTANCE



THINK & DISCUSS

Is tolerating others differences being accepting?

ACCEPTANCE



THINK & DISCUSS

What is one thing that makes you unique? How would you feel if someone judged you for it?

ACCEPTANCE

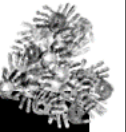
How can you show acceptance to someone with different interests or hobbies?



THINK & DISCUSS

ACCEPTANCE

What are honest and respectful ways to tell someone that you disagree with them?



THINK & DISCUSS

ACCEPTANCE

Why is it important to respect people's opinions, even when you disagree?



THINK & DISCUSS

ACCEPTANCE

How can you support a new student who's trying to fit in?



THINK & DISCUSS

ACCEPTANCE

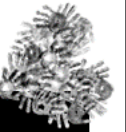
How can you show acceptance to someone with different interests or hobbies?



THINK & DISCUSS

ACCEPTANCE

What are honest and respectful ways to tell someone that you disagree with them?



THINK & DISCUSS

ACCEPTANCE

Why is it important to respect people's opinions, even when you disagree?



THINK & DISCUSS

ACCEPTANCE

How can you support a new student who's trying to fit in?



THINK & DISCUSS

ACCEPTANCE

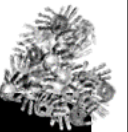
How can you help
stop stereotypes in
school or in your
friend group?



THINK & DISCUSS

ACCEPTANCE

What does it look like
to listen with
acceptance instead
of judgment?



THINK & DISCUSS

ACCEPTANCE

What can you do if you
hear someone making
fun of another
student's background
or identity?



THINK & DISCUSS

ACCEPTANCE

Why is self-
acceptance just as
important as
accepting others?



THINK & DISCUSS

ACCEPTANCE

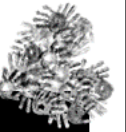
Why might someone hide parts of who they are?
How can you be supportive?



THINK & DISCUSS

ACCEPTANCE

How can you show kindness and acceptance during a disagreement?



THINK & DISCUSS

ACCEPTANCE

What role does empathy play in showing acceptance?



THINK & DISCUSS

ACCEPTANCE

How can you include others who have different abilities or learning needs?



THINK & DISCUSS

ACCEPTANCE

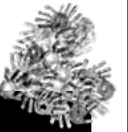
Why is it okay for friends to have different opinions or beliefs?



THINK & DISCUSS

ACCEPTANCE

How can you encourage your friends to be more inclusive?



THINK & DISCUSS

ACCEPTANCE

How can accepting others help reduce bullying?



THINK & DISCUSS

ACCEPTANCE

How does fear of being judged make people act differently?



THINK & DISCUSS

ACCEPTANCE

SITUATION CARDS

SITUATION

WHAT WOULD YOU DO?

CARDS

TIPS FOR USING CARDS

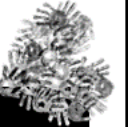
- Encourage students to think about each scenario and what they would do.
- Pair students together to have them take turns answering the task cards.
- Use the task cards during centers having students answer in small groups.
- To make it a writing activity, have students write their responses on paper or in their journals.
- For a class wide activity or morning meeting, use the included PowerPoint slides



DIG DEEPER QUESTIONS

- What is the honest thing to do and why?
- What are the possible consequences of this decision?
- What are the possible positive results of this decision?
- What would happen if an alternative decision was made?
- Does your decision help or hurt others?
- Is what you want to do different than the honest thing to do? Why?
- What are all the different decisions that could be made?

ACCEPTANCE



WHAT WOULD YOU DO?

A new student joins your class and doesn't know where to sit at lunch.

How can you show acceptance?

ACCEPTANCE



WHAT WOULD YOU DO?

A classmate shares a different opinion during a discussion and others start laughing.

How can you show acceptance?

ACCEPTANCE



WHAT WOULD YOU DO?

A friend refuses to hang out with someone because they dress differently.

How can you show acceptance?

ACCEPTANCE



WHAT WOULD YOU DO?

You're assigned a partner you've never talked to before.

How can you show acceptance?

ACCEPTANCE

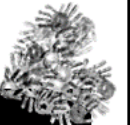


WHAT WOULD YOU DO?

Someone in your group project is quiet and seems nervous to share ideas.

How can you show acceptance?

ACCEPTANCE



WHAT WOULD YOU DO?

A student at school practices a religion you're unfamiliar with.

How can you show acceptance?

ACCEPTANCE

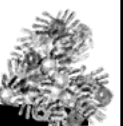


WHAT WOULD YOU DO?

You hear a peer make a rude comment about someone's accent.

How can you show acceptance?

ACCEPTANCE

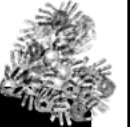


WHAT WOULD YOU DO?

Your friend makes fun of someone's lunch from another culture.

How can you show acceptance?

ACCEPTANCE



WHAT WOULD YOU DO?

Someone posts a different political opinion on social media.

How can you show acceptance?

ACCEPTANCE

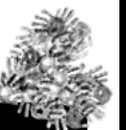


WHAT WOULD YOU DO?

You find out a friend likes a hobby or fandom you think is "weird."

How can you show acceptance?

ACCEPTANCE



WHAT WOULD YOU DO?

A peer opens up about a personal challenge they're facing.

How can you show acceptance?

ACCEPTANCE



WHAT WOULD YOU DO?

You notice a student struggling with English as a second language.

How can you show acceptance?

ACCEPTANCE



WHAT WOULD YOU DO?

A student is left out during a group game in gym class.

How can you show acceptance?

ACCEPTANCE



WHAT WOULD YOU DO?

A classmate uses a wheelchair and needs help getting around the school.

How can you show acceptance?

ACCEPTANCE



WHAT WOULD YOU DO?

You meet someone with a very different background than yours.

How can you show acceptance?

ACCEPTANCE



WHAT WOULD YOU DO?

Your class is celebrating a cultural holiday you've never heard of.

How can you show acceptance?

ACCEPTANCE



WHAT WOULD YOU DO?

A new student doesn't speak much and keeps to themselves.

How can you show acceptance?

ACCEPTANCE



WHAT WOULD YOU DO?

Someone in class is teased because they answer questions differently.

How can you show acceptance?

ACCEPTANCE



WHAT WOULD YOU DO?

A classmate gets excited about something you don't understand.

How can you show acceptance?

ACCEPTANCE



WHAT WOULD YOU DO?

You hear a stereotype being repeated about a certain group of people.

How can you show acceptance?

ACCEPTANCE



WHAT WOULD YOU DO?

Your friend wears a hijab (head scarf) because of her religious beliefs. Some people look at her weird because of it.

How can you show acceptance?

ACCEPTANCE



WHAT WOULD YOU DO?

A friend excludes someone from a group chat because they're "not like us."

How can you show acceptance?

ACCEPTANCE



WHAT WOULD YOU DO?

Your partner disagrees with your idea during a project

How can you show acceptance?

ACCEPTANCE



WHAT WOULD YOU DO?

You see a person being treated badly because they have a disability.

How can you show acceptance?

ACCEPTANCE
Recognize,
appreciate, AND
respect THOSE
WHO ARE different
FROM YOU.

CHARACTER EDUCATION

ACCEPTANCE

Recognize, appreciate,

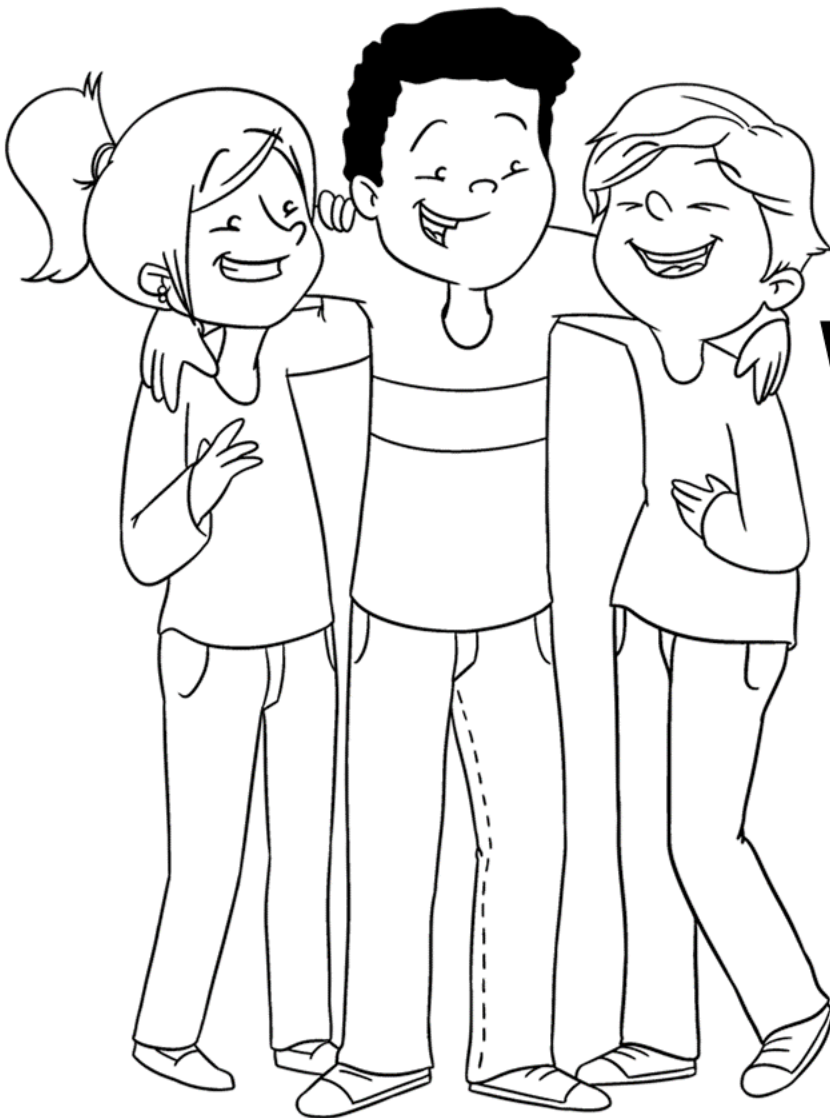
AND respect

THOSE

WHO ARE

different

FROM YOU.



CHARACTER EDUCATION

ACCEPTANCE

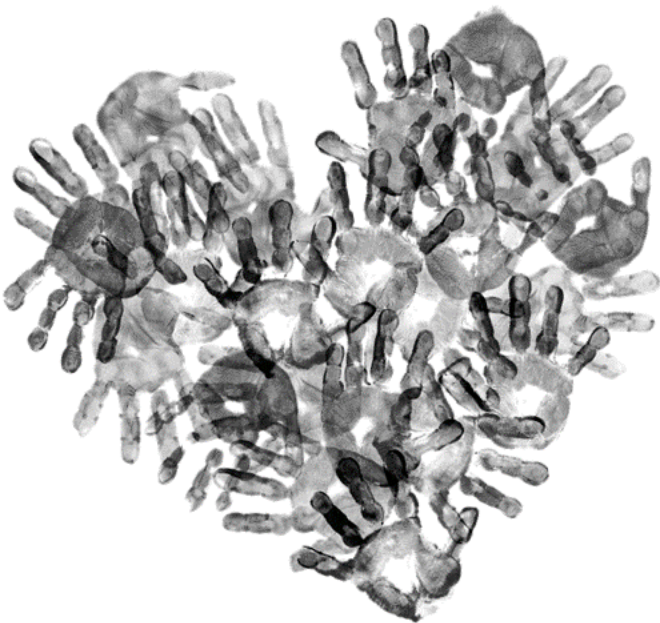
Recognize, appreciate,

AND respect

THOSE WHO ARE

different

FROM YOU.



CHARACTER EDUCATION

ACCEPTANCE

Recognize, appreciate, AND respect THOSE
WHO ARE *different* FROM YOU.

Be open-
minded.

Learn about
different
cultures.

Be kind, show
empathy, and
be respectful.

Treat people
fairly and
include
everyone.

Get to know
people who
are different
than you.

Be patient with
those who have
different abilities.



CHARACTER EDUCATION

QUOTE ABOUT

ACCEPTANCE

“IT IS NOT OUR DIFFERENCES THAT DIVIDE US. IT IS OUR INABILITY TO RECOGNIZE, ACCEPT, AND CELEBRATE THOSE DIFFERENCES.”

- AUDRE LORDE

STUDENTS WITH



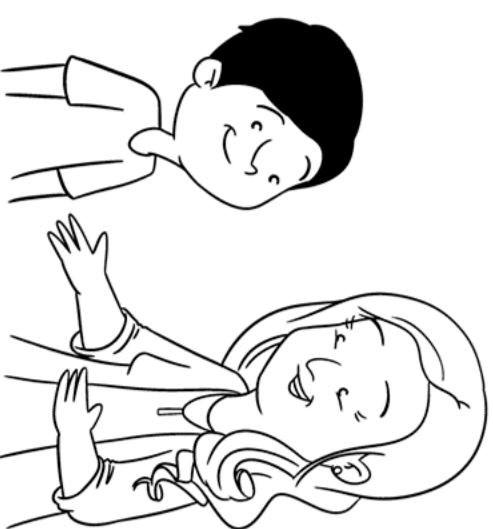
ACCEPTANCE RECOGNIZE, RESPECT, AND WELCOME DIVERSITY INTO THEIR CLASSROOM.

- ✱ Welcome and include everyone, speak up if someone is being treated unfairly.
- ✱ Listen to and value people's different opinions, cultures, identities, and interests.
- ✱ Speak to others in a way that shows understanding and avoids judgment or stereotypes.

CHARACTER EDUCATION

CAREERS WITH

ACCEPTANCE COUNSELOR



Counselors are trained to give guidance on personal, social, or psychological problems. They may specialize in certain areas such as marriage counseling or school counseling. There are a number of characteristics that counselors must have to be effective, including empathy, communication, listening skills, and being accepting of others' differences. Counselors work with a diverse group of clients and many of them may have different religions, cultures, or views different than their own. They must accept those differences, to create a successful working relationship to make progress with their client.

LEADERS WITH

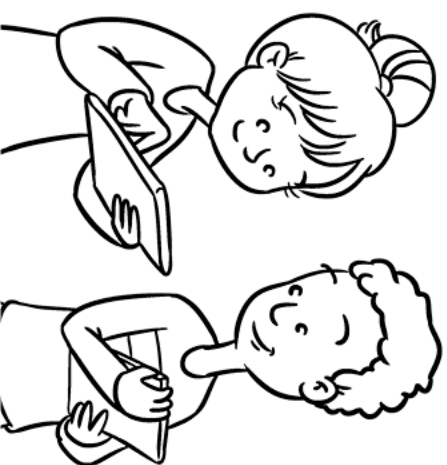
ACCEPTANCE



Mahatma Gandhi was an Indian Lawyer, who used nonviolent protests to achieve India's independence from Britain and inspired movements for civil rights and freedom across the world. In 1915, he set about organizing peasants, farmers, and laborers to protest against excessive land tax and discrimination. Assuming leadership of the Indian National Congress, Gandhi led nationwide campaigns for easing poverty, expanding women's rights, and building religious and ethnic peace. He was imprisoned many times for many years because of his efforts. He undertook several hunger strikes to help stop the religious violence within India. He showed us the importance of being a leader who showed acceptance, he said "*I do not want my house to be walled in on all sides and my windows to be stifled. I want all the cultures of all lands to be blown about my house as freely as possible.*"

DIGITAL

ACCEPTANCE



BEING RESPECTFUL ONLINE OF FEELINGS OR BELIEFS THAT ARE DIFFERENT FROM YOUR OWN.

- * Use polite language in comments, group chats, and discussions — even when opinions are different.**
- * Like and comment positively on others' posts, and avoid making fun of someone's photo, interests, or ideas.**
- * If someone is being ignored, blocked, or teased online, speak up or report the behavior to a trusted adult.**

MY ACCEPTANCE PLEDGE

This is how I am going to show acceptance:

--	--	--



Pledge by: _____

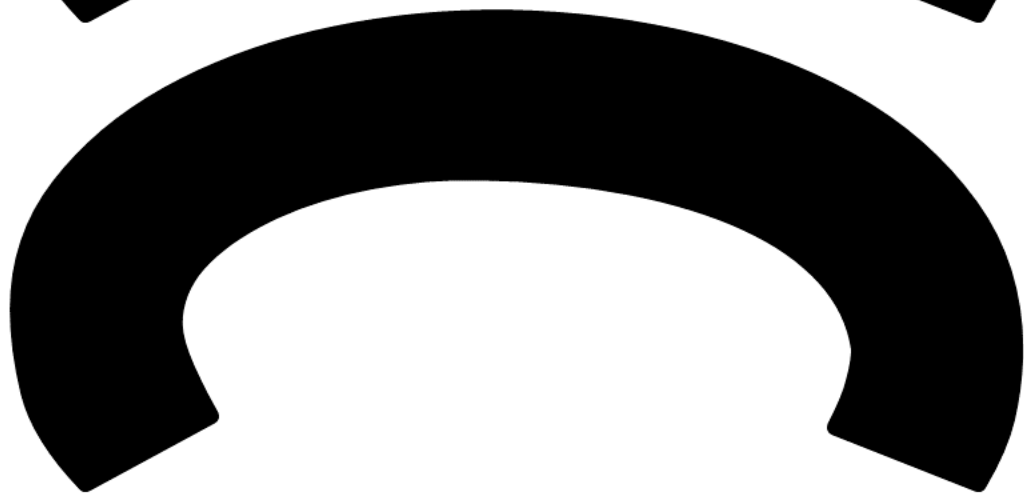
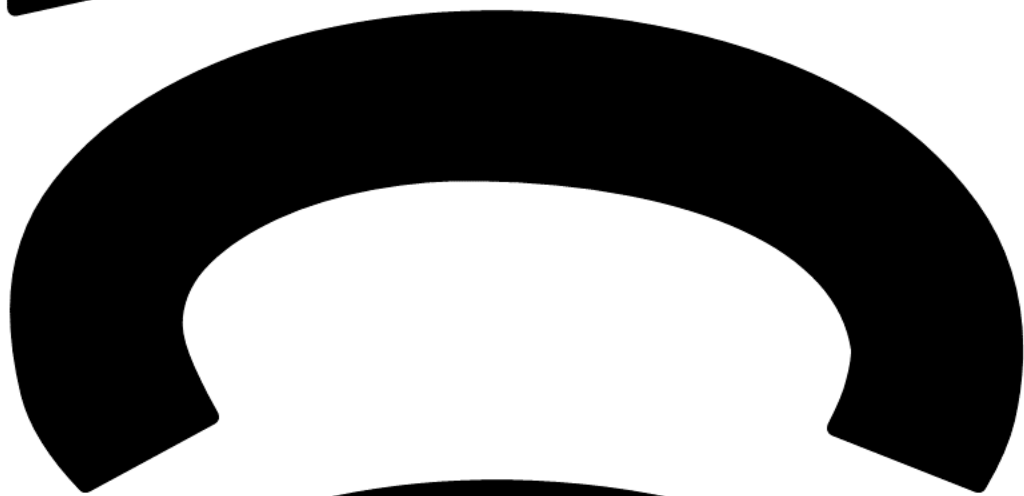
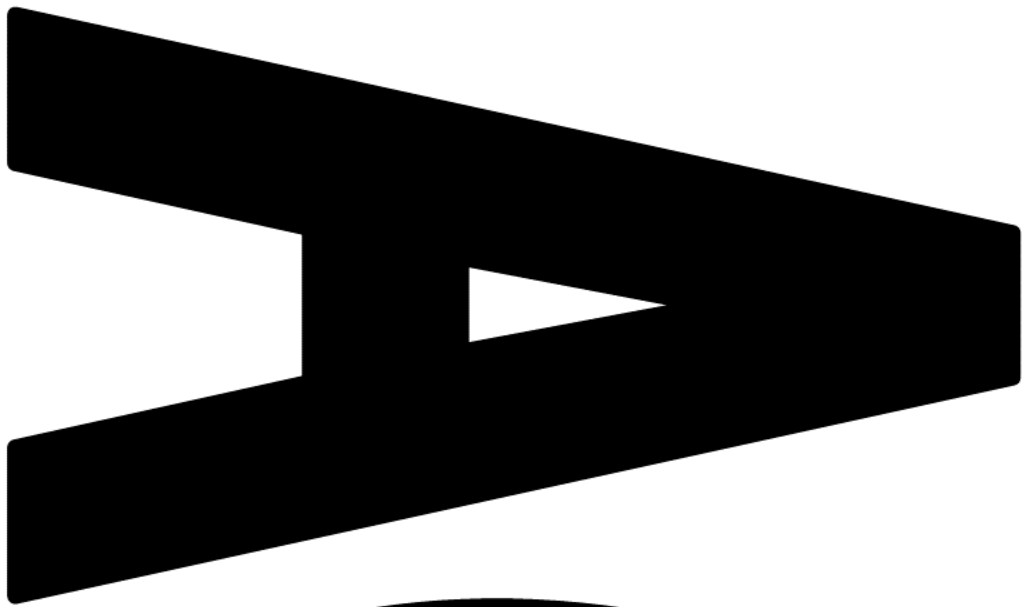
MY ACCEPTANCE PLEDGE

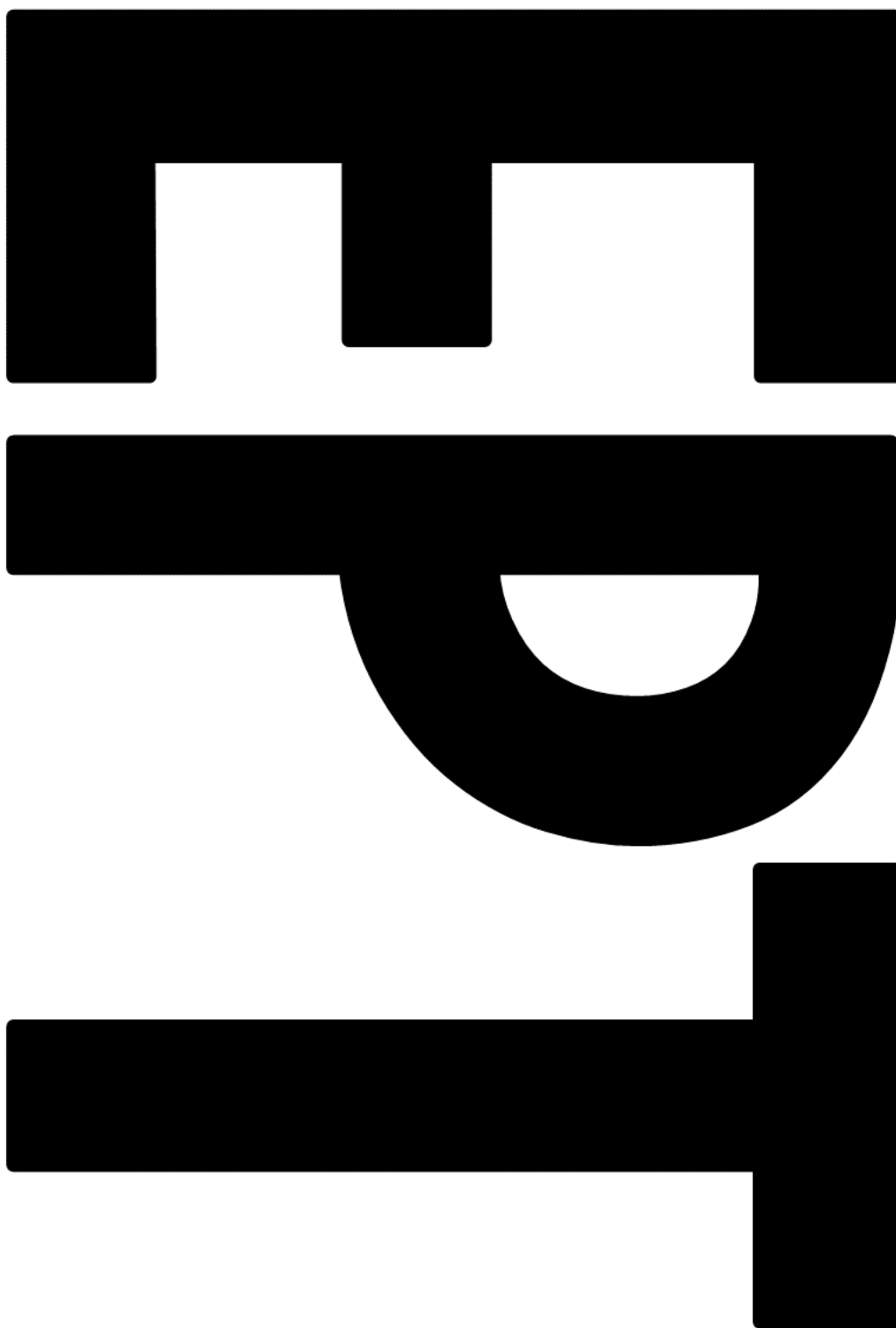
This is how I am going to show acceptance:

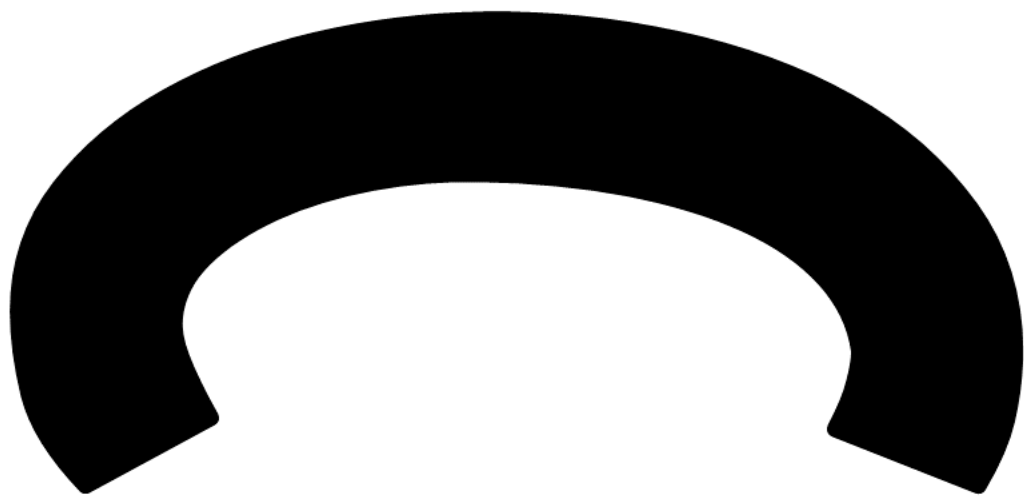
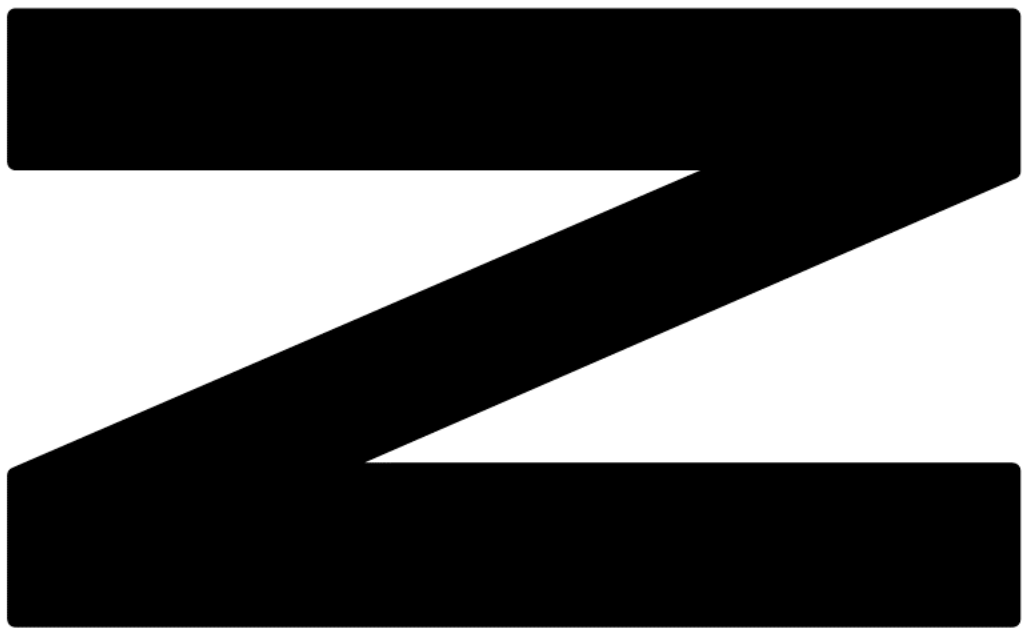
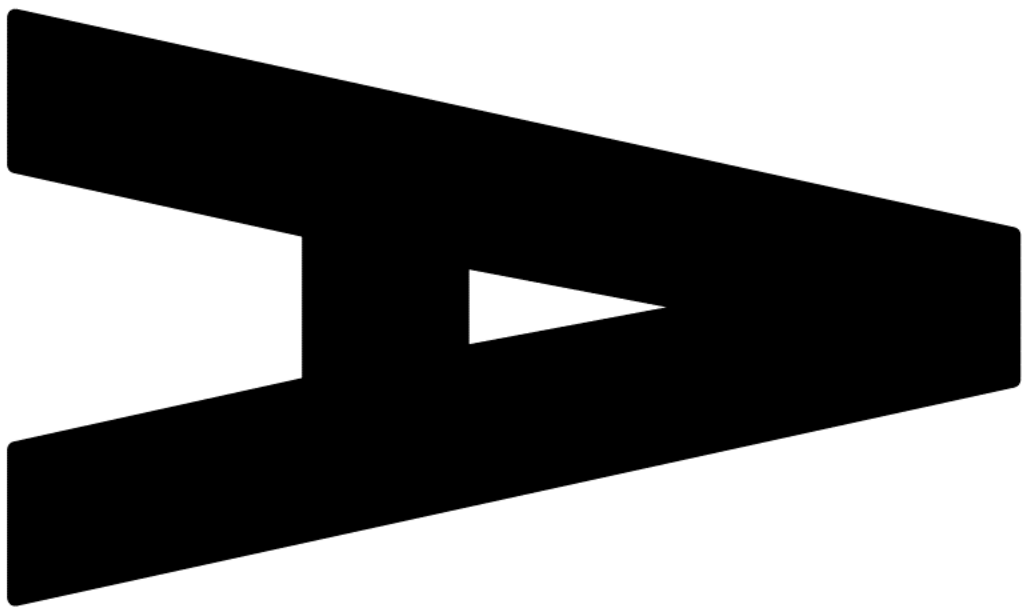
--	--	--



Pledge by: _____









ACCEPTANCE



CHARACTER
EDUCATION

2 INCH

ACCEPTANCE



CHARACTER
EDUCATION

1.5 INCH

ACCEPTANCE



CHARACTER
EDUCATION

1 INCH

GOOGLE SLIDES

Your resource comes with a digital version for use in Google Slides via Google Classroom. Follow these steps to upload your resource.

1 Click here  [Character Education: Acceptance](#)

2 You will be prompted to make a copy of the resource. Click on the blue box that says "Make a copy" and the resource will go directly into your Google drive.

Google Drive

Copy document

Would you like to make a copy of Career Interest Inventory?

Make a copy



3 Go to your Google Drive and locate the copy of the file. You can rename the file at this point or add/delete slides.

4 Next, go to your Google Classroom and add an assignment. Select the Google Drive Symbol and select the resource you want to assign.

5 From here, you should see a grey box that says "Students can view file." Click the grey box. A dropdown menu should appear. Select, "Make a copy for each student."

YOU HAVE TO MAKE A COPY FOR EACH STUDENT!

Otherwise they will all be editing the same file.

Click "Assign" in the top right corner if you're ready to post!

This product is meant to be used in "edit" mode (not "presentation" mode). Edit mode is the only mode that allows drag & drop and writing in text boxes.

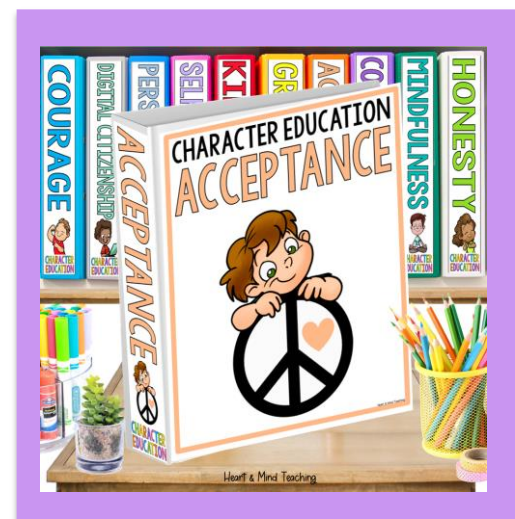
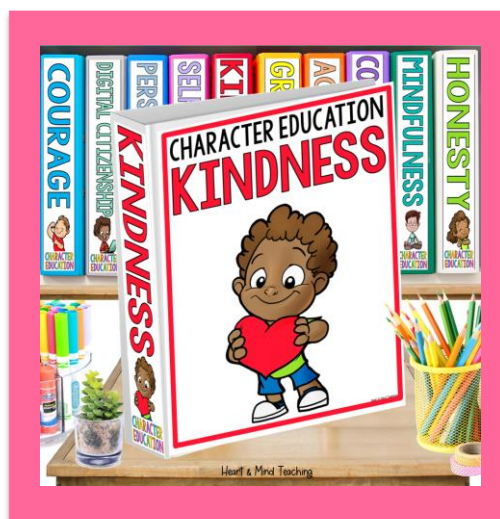
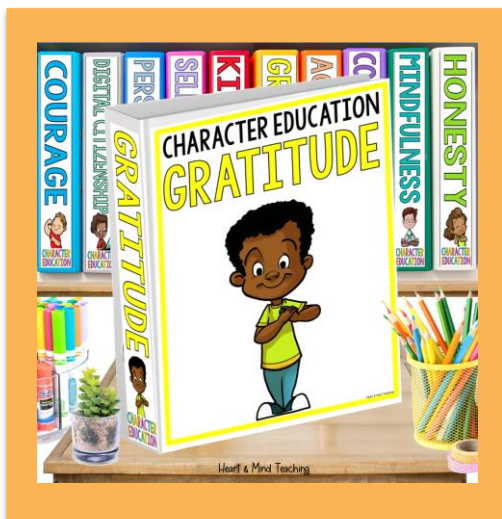
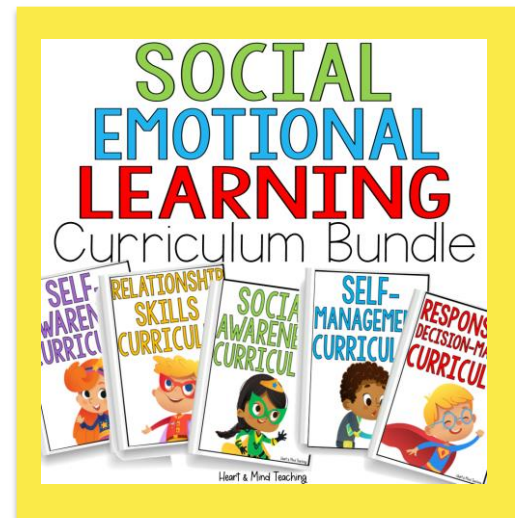
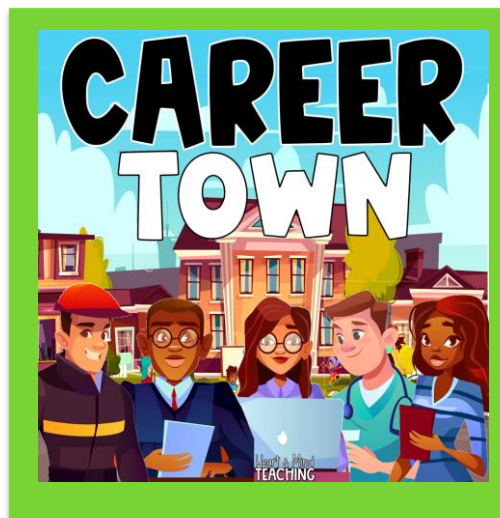
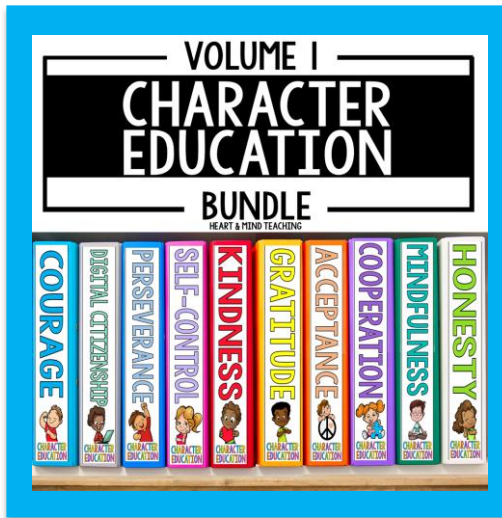
Helpful links for using Google Classroom:

[Teacher Tips for using Google Classroom \(TPT blog\)](#)

[Getting Started with Google Classroom \(youtube video\)](#)

CHECK THESE OUT

CLICK ON THE PICTURES TO GET A CLOSER LOOK.



COUNSELOR
Collab
— with Laura & Ashley —



Would you like to spend less time browsing for resources and lesson planning, and more time serving students? Let Laura from [Music City Counselor](#) and Ashley from [Heart and Mind Teaching](#) do the work for you!

CLICK TO COLLAB

MEMBER Perks

- ♥ Data-driven resources by theme.
- ♥ \$35+ value of ready-to-use materials.
- ♥ Lessons, group curriculums, forms, & activities.
- ♥ Tier 1, 2, and 3 research-based resources.
- ♥ No contracts, cancel anytime.

HEART+MIND
TEACHING



THANK YOU

FOR SUPPORTING MY LITTLE SHOP.

Hi there! I'm Ashley- a School Counselor, curriculum developer, blogger, and mama to two young boys. I have a passion for creating fun and engaging resources for Counseling and Social Emotional Learning.

LET'S BE FRIENDS


Ashley

Access my
Freebie
Library



FOLLOW FOR EXCLUSIVE SAVINGS

New products are 50% off for 24hrs.

[CLICK HERE](#)

★ HOW CAN YOU EARN TPT CREDITS? When you leave feedback, TpT rewards you with credits that you can use toward future purchases.

ACCESS MY FREEBIE LIBRARY

Join my Newsletter to be informed of all future added freebies.

[I WANT FREEBIES](#)

TERMS OF USE

© Heart and Mind Teaching, 2025. All rights reserved. Purchase of this item entitles the purchaser the right to reproduce for classroom, personal, and google classroom use only. Use in multiple classrooms, requires the purchase of additional licenses. Redistribution or duplication of this product is strictly forbidden without the written permission of the publisher. Copying any part of this product and placing it on a publicly accessible website is strictly forbidden and is a violation of the Digital Millennium Copyright Act (DMCA). You may post this for single-classroom use on a password protected student site such as google classroom. **You may NOT post my products on any public, for-profit, or commercial websites or entities, such as Outschool.** Please do not sell or distribute any part of this as your own. Thank you for abiding by universally accepted codes of professional ethics while using this product.



If you have any questions or concerns please email me at:

heartandmindteaching@gmail.com

CREDITS

